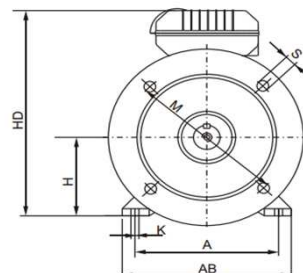
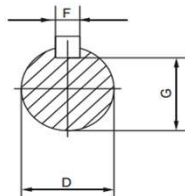
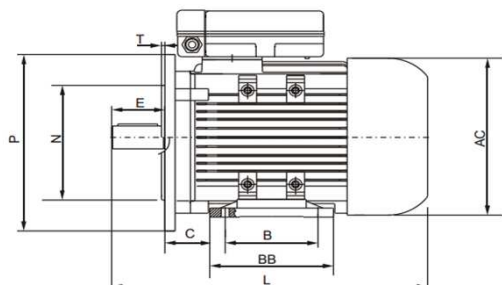
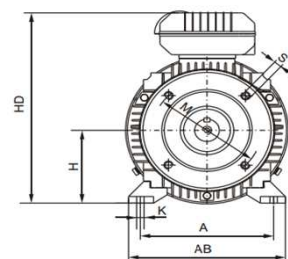
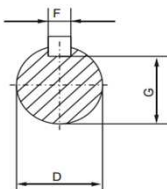
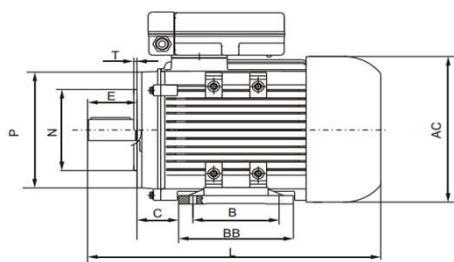


# MOLL-MOTOR



Wymiary silników jednofazowych serii GMY, GMYL oraz GMYC, łapowo-kołnierowych B35

	A	B	C	D	E	F	G	H	K	P	N	M	S	T	AB	BB	HD	AC	L
<b>63</b>	100	80	40	11	23	4	8,5	63	7	140	95	115	10	3	135	100	182	120	217
<b>71</b>	112	90	45	14	30	5	11	71	7	160	110	130	12	3,5	150	112	202	136	250
<b>80</b>	125	100	50	19	40	6	15,5	80	10	200	130	165	12	3,5	153	125	227	160	310
<b>90S</b>	140	100	56	24	50	8	20	90	10	200	130	165	12	3,5	172	156	246	175	340
<b>90L</b>	140	125	56	24	50	8	20	90	10	200	130	165	12	3,5	172	156	246	175	340
<b>100L</b>	160	140	63	28	60	8	24	100	12	250	180	215	15	4	200	172	250	196	425
<b>112M</b>	190	140	70	28	60	8	24	112	12	250	180	215	15	4	230	181	285	220	450
<b>132S</b>	216	140	89	38	80	10	33	132	12	300	230	265	15	4	260	186	330	259	485
<b>132M</b>	216	178	89	38	80	10	33	132	12	300	230	265	15	4	260	224	330	259	525



Wymiary silników jednofazowych serii GMY, GMYL oraz GMYC, łapowo-kołnierowych B34

	A	B	C	D	E	F	G	H	K	P	N	M	S	T	AB	BB	HD	AC	L
<b>63</b>	100	80	40	11	23	4	8,5	63	7	90	60	75	M5	2,5	135	100	182	120	217
<b>71</b>	112	90	45	14	30	5	11	71	7	105	70	85	M6	2,5	150	112	202	136	250
<b>80</b>	125	100	50	19	40	6	15,5	80	10	120	80	100	M6	3	153	125	227	160	310
<b>90S</b>	140	100	56	24	50	8	20	90	10	140	95	115	M8	3	172	156	246	175	340
<b>90L</b>	140	125	56	24	50	8	20	90	10	140	95	115	M8	3	172	156	246	175	340
<b>100L</b>	160	140	63	28	60	8	24	100	12	160	110	130	M8	3,5	200	172	250	196	425
<b>112M</b>	190	140	70	28	60	8	24	112	12	160	110	130	M8	3,5	230	181	285	220	450
<b>132S</b>	216	140	89	38	80	10	33	132	12	200	130	165	M10	3,5	260	186	330	259	485
<b>132M</b>	216	178	89	38	80	10	33	132	12	200	130	165	M10	3,5	260	224	330	259	525